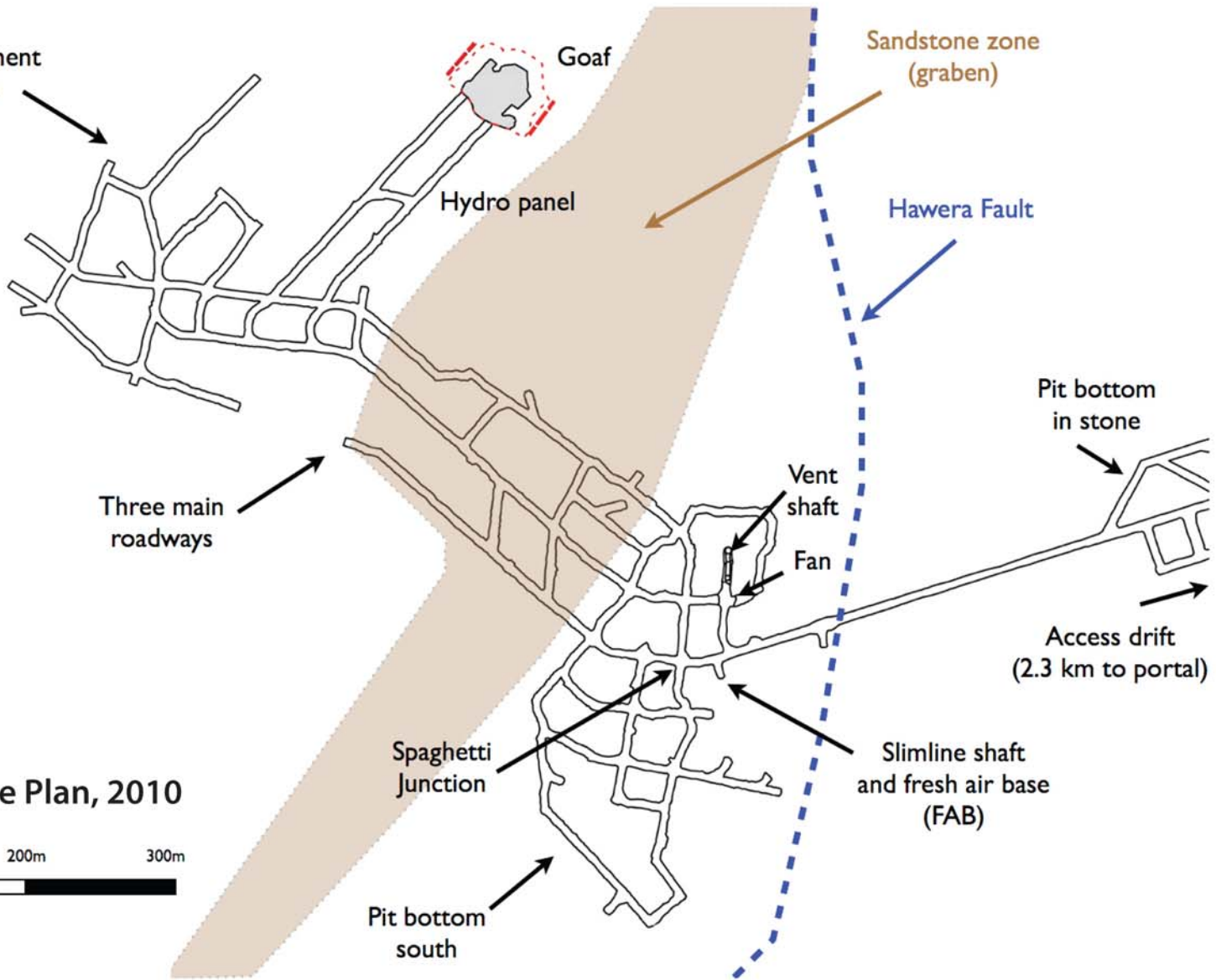


Development areas



Goaf

Hydro panel

Sandstone zone (graben)

Hawera Fault

Three main roadways

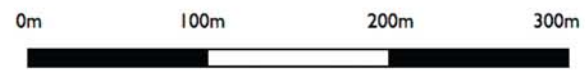
Vent shaft

Fan

Pit bottom in stone

Access drift (2.3 km to portal)

Pike River Coal Mine Plan, 2010



Spaghetti Junction

Slimline shaft and fresh air base (FAB)

Pit bottom south